



# Carelines

September 2010

CANCER SERVICES OF NORTHEAST INDIANA • *Compassion, Knowledge, Support*

Volume 66 • Issue 3

*A Client Story:*

## *Hope Alive...*

*by Nimal G. Gernando*

**O**ne beautiful day in June 2008, I was attending a conference in Indianapolis and developed a slight and sudden pain in my lower abdomen.

I tried to shrug it off, but it didn't go away and actually got worse. I had a bad feeling about it, so I decided to head home. I called my wife on the way, and she suggested that I call the doctor. The doctor saw me right away, but he couldn't find anything and suggested that I get a CAT scan. The scan showed a tumor blocking my colon, so I had a colonoscopy, which confirmed the tumor and I underwent surgery to remove it immediately. That was the beginning of a new life for me and one that has been humbling and challenging.

After my diagnosis, I found Cancer Services of Northeast Indiana, which has been a huge source of support and encouragement to me and my family. My Client Advocate, Brandon, has been there at every turn and has never hesitated to provide the information that I need. I have also been enjoying the massages provided through its new program, Caring Touch. The experience is so relaxing and comforting. I am thankful to Cancer Services for the support and services provided on my journey.

My life goes on and I am enjoying it to the fullest. I have learned to look on the bright side and have been counting my blessings. I have two boys: Nathan (8) and Nelig (7). My wife, Shanthinie, has been strong and is taking care of me and the two boys with much courage and perseverance. She is scared, yet she has been there to support me and take care of the family throughout this journey. We do not have family in the area, so she has found strength in the community, especially from our church family, which has rallied around us and offered encouragement and support. Life is a struggle but I am keeping my *Hope Alive*.



Nathan, Shanthinie, Nelig and Nimal Gernando

## *Briefly*

### *Calling all Volunteers...*

**Cancer Services Annual  
Design on Life Spring Auction  
Saturday, February 26, 2011**

Planning is underway for next year's Design on Life event, which will be held on **Saturday, February 26, 2011** at the Memorial Coliseum. If you would like to help with this event, contact Cheryl Dafforn at (260) 484-9560 or [cdafforn@cancer-services.org](mailto:cdafforn@cancer-services.org).

## Meet the Neighbors Cook Out



Stephen May and  
Linda Bewley

On Friday, July 9, we served up hotdogs, snacks and beverages for the neighboring businesses in our corporate park. We'd like to thank staff members from NAI Harding Dahm, Brotherhood Mutual, General Credit Union, Werling Financial, Valic Financial Advisers, and Ducharme, McMillen & Associates for taking time out of their day to play a couple rounds of corn hole and tour our facility.

## TIE 1 ON 4 PROSTATE CANCER SEMINAR

Cancer Services of Northeast Indiana is sponsoring a seminar on prostate cancer and men's sexual health on Saturday, September 18, from 9:00 AM to 1:00 PM. The event will be held at Cancer Services, 6316 Mutual Drive in Fort Wayne.



The seminar will feature the following presentations:

- Prostate Cancer: Recent Developments and Advanced Treatments
- Maintaining and Enhancing Men's Sexual Health
- The Role of Nutrition in Preventing and Fighting Prostate Cancer
- The Role of Exercise in Preventing and Fighting Prostate Cancer

To reserve your spot, call (260) 484-9560 or for more information, visit [www.cancer-services.org](http://www.cancer-services.org)

Also, look for blue ties and Tie1On4 Prostate Cancer banners out in the community during the month of September. Join business men and women across Northeast Indiana on September 30 and wear a blue tie to work to raise awareness for Prostate Cancer. Email photos of you and your staff in the blue ties to Amber Recker at [arecker@cancer-services.org](mailto:arecker@cancer-services.org) to appear in the next issue of Carelines.

## Welcome Leah Kneubuhler



Cancer Services of Northeast Indiana is pleased to welcome Leah Kneubuhler as a part-time Children's Advocate. She will work with children who have been diagnosed with cancer and their families in Northeast Indiana.

## SAVE THE DATE UPCOMING EVENTS TO BENEFIT CANCER SERVICES



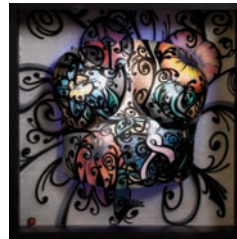
### SATURDAY, September 18

Catalyst Pull Together for Cancer Challenge  
508 North Hadley Road, Fort Wayne  
Noon-3pm • Entry Fee: \$5  
Come out and show us how strong you are!  
[www.catalyst-fitness.com/pulltogether.php](http://www.catalyst-fitness.com/pulltogether.php)



### FRIDAY, October 15

3rd Annual Bust A Move  
@ Masonic Temple  
Doors open at 6:00 PM  
Auction begins @ 7:30 PM  
Tickets \$10, Available at  
Cancer Services  
[www.fwderbygirls.com/bustamove](http://www.fwderbygirls.com/bustamove)



### SATURDAY, October 16

Beat BC 5K  
Central Noble High School  
Registration 7:30-8:00 am  
Fun Run 8:15 am,  
Race Begins 8:30 am  
[www.beatbc5k.org](http://www.beatbc5k.org)



## agency staff

**Cancer Services of Northeast Indiana Inc.**  
6316 Mutual Drive • Fort Wayne, IN 46825  
(260) 484-9560 • (866) 484-9560 Toll free  
[www.cancer-services.org](http://www.cancer-services.org)

*Carelines is a quarterly publication of Cancer Services of Northeast Indiana*

**Dianne May**, President and CEO

**Gail Hamm**, Program Director

**Amber Recker**, Director of Development

**Kathy Ryan**, Accounting Manager

**Cheryl Dafforn**, Volunteer Coordinator

**Linda Bewley**, Outreach Coordinator

**Peter Albertson**, Client Advocate

**Leah Kneubuhler**, Children's Advocate

**Brandon Bower**, Client Advocate

**Denise Glasser**, Client Advocate

**Maureen Zink**, Client Advocate

**Marcia Reynolds**, Finance Assistant

**Krista Smothermon**, Receptionist

**Allen Koehlinger**, Client Equipment Specialist

**Mary Weiks**, Client Equipment Specialist

## Cancer Services 6th Annual Tribute Dinner *Bridging Troubled Waters*

Mark your calendars for Thursday, September 30, and plan to join us for the 6th Annual Tribute Dinner in the Marquis Ballroom at the Fort Wayne Marriott. This year's event, "Bridging Troubled Waters: A Reflection on Life's Journey," offers our community an opportunity to pause, treasure the memories of people who have been touched by cancer, and pay tribute to them, whether a cancer survivor, caregiver, physician, or lost loved one. The evening includes a chance to share memories with family and friends, enjoy a nice dinner and entertainment, and display a photograph of your loved one, along with his or her story.



To learn how you can pay tribute to someone at our event or for tickets, contact Amber Recker at 484-9560, Toll Free @ 866-484-9560, or arecker@cancer-services.org.

### *You're Invited to attend...*

Tribute Dinner, fundraiser for Cancer Services

Marquis Ballroom, Fort Wayne Marriott,  
305 E. Washington Center Road, Fort Wayne, IN

**Thursday, September 30, 6:00 PM**

\$100 per ticket, \$800 per table (includes one tribute)

Guest Speaker, Stephen Clough, Singer/songwriter,  
teacher, and cancer survivor

Please RSVP by September 1, 2010

### *2010 Event Sponsors*

Parkview Comprehensive Cancer Center, Fort Wayne Medical Oncology & Hematology, Mattress Warehouse, PHP of Northern Indiana, Radiation Oncology Associates, Shambaugh, Kast, Beck & Williams LLP, Lincoln Financial Group, Lutheran Health Network, Parkview Whitley Hospital, Parkview Noble, Salin Bank, Vorderman Photography, Cosmic Soup, Aesthetic Plant Specialists, Shindigz, Scott's Food Stores.

## *Heather Currie's Reflection on Tribute Dinner 2009*

My mother passed away from colon cancer in January 2009, and my father invited family and friends to share a



Heather Currie (right) with her sister, Kristanya Zittlow, and father, Don Currie

table at Cancer Services Tribute Dinner 2009 to celebrate her life. The tribute gift was a picture frame, so we searched through our cameras and in our photo albums for a suitable picture of my mother. Going through the pictures wasn't easy, partly because it had been less than a year since she passed, making it hard to see so many photos of good times, knowing that there would be no new additions to our collections. And partly it was hard because every individual, my mother included, has so many facets that no single photo captures them completely. We found photos of her at weddings, holidays, and dressed up for previous Cancer Services dinners

where her own parents had been honored for their battles with cancer. We eventually chose a candid photo of her from our last family vacation in 2007 because it showed her in her element – relaxing in a National Park, enjoying the peacefulness of sunshine, trees and family close at hand. It showed her not just living with cancer, but thriving with it. The picture and frame now sit on the piano where my mother often played. It is joined by bookends and a vase - three handsome tributes, from Cancer Services dinners, to amazing members of our family.

My mother's battle with cancer is a story of living, surviving, and thriving, as many of them are. Despite all that she lost through cancer, she survived so much of it during her 11-year battle. It was her determination to thrive that has left an indelible mark on us and continues to inspire those who knew her. We survive her, but those who loved her have felt the loss deeply, but it won't stop us from thriving. At the Cancer Services dinner, we were surrounded by people who knew well what it means to live, survive and thrive. Despite all of the loss, there was not a feeling of sadness to the event. There were a few tears (living, surviving and thriving isn't easy, after all); the event, however, was a happy occasion, with much to celebrate. Those who have survived their battles with cancer, and those of us who have survived family members lost to cancer, have much to be optimistic about. The dinner gave us an environment in which to not only honor those who fight cancer, but to thrive because of them.



Just search Cancer Services of Northeast Indiana any time...



Find us on Facebook

## Upcoming Nutrition Seminars

### Nutrition for symptom management...

*Simple tricks to increase appetite during cancer treatment*

Thursday, September 9, 2010

5:30—7:00 PM

Presenter:

Mischa Story, RD, Lutheran Hospital  
Cancer Services Healing Arts Center  
6316 Mutual Drive, Fort Wayne, IN 46825  
RSVP by September 3 to (260) 484-9560



### Healthy Eating for the Holidays

November 11, 2010

Presenter: Chris Moore, RD, Parkview Hospital  
Cancer Services of Northeast Indiana  
Healing Arts Center,  
6316 Mutual Drive, Fort Wayne, IN 46825  
RSVP by November 5 to (260) 484-9560



## Health Fairs Schedule

Stop by and see us at these upcoming health fairs:

### Senior Information Fair

Thursday, September 16, 2010

9:00 AM - 3:00 PM

Allen County Public Library (900 Library Plaza)

### Senior Health and Information Fair

(Hosted by United Way)- Friday, October 1, 2010

8:00 AM - 12:00 PM

Turnstone Center for Children & Adults  
(3320 North Clinton)

## re-Energize!

A program of light exercise for the entire family.

Join us Tuesday and Thursday evenings  
from 6:00 PM -7:00 PM this fall.

Please call (260)-484-9560

for more information or to sign up.

## Leaving a Legacy's *Write a Will Day,* November 16



Jack Allen

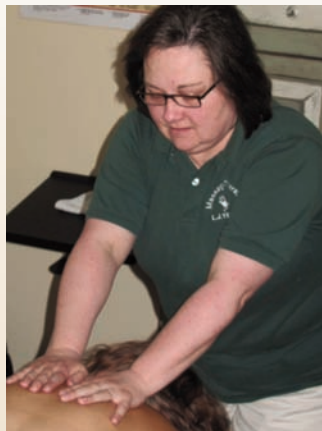
Jack and Doris Allen first became acquainted with Cancer Services of Northeast Indiana in 2000 and learned about the helpful supplies and services available. Having lived all their lives in northeast Indiana, Jack and Doris had deep roots in our community. Doris was a registered nurse and Jack worked as a nuclear medicine technician at the VA Hospital.

While they didn't have children of their own, they wanted to leave a legacy for their community and extended family in the area. Doris passed away in 2007 and Jack died last November at the age of 82. Jack chose to make caring for people with cancer a part of their legacy when, in his will, he named Cancer Services the recipient of one-third of his estate.

There are many ways to make caring for people with cancer part of your personal legacy. You may determine a specific amount that you want to give to Cancer Services as part of your last will and testament or you may choose to leave all or a certain percentage of your assets to charitable good. Talk with your legal advisor about the method that best suits your needs and desire.

If you do not have an attorney and want to make a simple will that includes a charitable gift, then **Write A Will Day** may be for you. Volunteer attorney George Bewley will be at Cancer Services on Tuesday, November 16, from 4:00 - 8:00 PM to assist people in creating a simple will. Appointments are required. Call Amber Recker at 484-9560 for more information. What will your legacy be?

## Massage Therapist LJ Yoder Loves *Connecting* with *Clients*



LJ Yoder, CMT

LJ Yoder is one of the dedicated volunteer massage therapists who helped us launch Caring Touch, an oncology massage program that is available to our clients and their primary caregivers. She became a massage therapist at the urging of a very close friend who was diagnosed with a rare form of thyroid cancer. During the last year of her friend's life, when she hurt, LJ massaged. Together, they checked out some schools online, and when her friend died in December 2003, LJ registered for courses.

LJ Yoder is one of the dedicated volunteer massage therapists who helped us launch Caring Touch, an oncology massage program that is available to our clients and their primary caregivers. She became a massage therapist at the urging of a very close friend who was diagnosed with a rare form of thyroid cancer. During the last year of her friend's life, when she hurt, LJ massaged. Together, they checked out some schools online, and when her friend died in December 2003, LJ registered for courses.

When she heard about the opportunity to train at Cancer Services with Tracy Walton, a nationally recognized trainer, researcher, writer, massage therapist and teacher, she jumped at the chance. "I was put on a waiting list when I inquired about the class and wasn't sure if I would get to take it," LJ says. "The training was unlike any that I have ever done. I have had many instructors, but Tracy has a gift for teaching. She really draws you in and encourages you along the way."

"Their bodies have gone through a lot," LJ says, "and if I can help ease their discomfort that contributes to their overall well-being, I feel good about that."

As a 20-year cancer survivor and former caregiver, LJ understands what her clients at Cancer Services have been going through and shares a bond with them. "I love connecting with them," she says. "I have enjoyed my experience volunteering at Cancer Services, and I appreciate all that the organization did to get this training to our part of the country. I am also grateful to the Foellinger Foundation for the grant that funded it."

## Cancer Services Nominates Bill Schroeder for Carl D. Rolfsen Stewardship Award

By Lynette Miller



He has an impressive resume of achievements, including a stint in the Army in the 1950s, 31 years as a school administrator—he was the first Fort Wayne Community School elementary school principal with an earned doctorate—and nearly 20 years as a volunteer with Cancer Services of Northeast Indiana. Because of all of this and much more, William "Bill" Schroeder has been nominated by Cancer Services for the Foellinger Foundation's Carl D. Rolfsen Stewardship Award.

Bill currently serves on the board for Cancer Services and has been an integral part of the organization during some of its most trying times. In 2001, when Cancer Services conducted a needs assessment that identified the necessity for a "knowl-

edgeable third-party cancer companion" and the client advocate program and subsequent pilot grant with the Robert Wood Johnson Foundation was born, Bill was there. When Cancer Services made the decision to expand services outside of Allen County in 2005, Bill was there. And during the 10-month period when Cancer Services was without an executive director, Bill was there to step in as an unpaid interim executive director. During that time, he kept the staff focused on programs and services offered by Cancer Services and launched the new client advocate program.

In order to qualify for the Carl D. Rolfsen Stewardship Award, one must demonstrate at least three of the "Ten

Basic Responsibilities of Nonprofit Boards," such as "ensuring effective planning," "monitoring and strengthening programs and services" and "building a competent board." The recipient of the Carl D. Rolfsen Stewardship Award will receive a \$10,000 operating grant and up to \$7,500 for board development from the Foellinger Foundation.

Bill has been an excellent example of the Ten Basic Responsibilities. Above and beyond his board responsibilities, he serves as an unofficial historian for Cancer Services. When new board members come on board, he is there to help them understand the history and character of the organization. He also serves on the board development committee, which is responsible for nominations and training of fellow board members, serving as board chair for two separate terms.

Through effective planning and his dedication to Cancer Services, the organization has become what it is today. His work has been utilized in the continuation of the client advocate program and service expansion to 11 counties.



Thank you to everyone who supported, honored, and remembered loved ones while walking in the 2010 Lapper. You make a wonderful difference!

## Lapper 2011 at Foster Park • May 21, 2011

Plan now to attend!

If you are interested in helping plan next year's event, please contact Amber Recker at [arecker@cancer-services.org](mailto:arecker@cancer-services.org) or (260) 484-9560.

### 2010 Lapper Donations

Patricia Adsit in Support of FWSUMC  
 Valerie Ahr in Support of Sandra Kennedy  
 Christy Allen  
 Don Allison  
 Janice & Wes Ambrione  
 Brenda Amburgey in Support of Debbie Durnell  
 Tammy Anderson  
 Phyllis & George Angel in Support of Linda Bewley  
 ARC, Inc.  
 B.J. Armstrong in Support of Jeannie Stevens  
 Carolyn Armstrong  
 Dave & Molly Arnold in Memory of Kent Roudebush  
 Tracey A Bade  
 Bryttani Bair in Honor of Grandma Pam  
 Steve Bair Jr.  
 Teresa Bair in Honor of my mom, Pam Saylor  
 Daryn Baker  
 Deanna Baker  
 Madeleine Baker in Memory of Sophia Koh, my mother  
 James Barkey  
 Barbara Barrett in Memory of Lynn Andrea Hudson  
 Linda Barth in Memory of Chris Larko  
 Mr. & Mrs. Kevin Bassett  
 Shawne Batterbee in Memory of Mark Hoar  
 Mary Beck  
 Shelby Beck in Support of Linda Knappenberger  
 Stephanie Beck in Support of Linda Knappenberger  
 Patricia Becker  
 Brock Bell  
 Minerva Belote  
 Kathy Bennett in Support of Inez Burch  
 Debbie Benzinger  
 Justin Berger  
 Angela Bergren in Memory of Father Chester Rotz  
 Emily Bernard  
 LeaAnne Bernstein in Support of Jeff Hamilton  
 Joyce Berry in Honor of Mary Jo Wolf  
 Marsha & Norman Berry in Support of Terri Roberts  
 Dawn Beverly in Honor of Grandpa  
 Jenny Beverly in Honor of Grandpa  
 Meghan Beverly in Honor of Grandpa  
 Shawn Beverly in Honor of Grandpa  
 George Bewley, Jr. in Memory of Bee Bewley  
 Laura Bewley  
 Linda Bewley  
 Nancy Bewley in Memory of Irene Harvey

Trisha Bianski in Honor of Mary Jo Wolf  
 Stan Bieberich in Support of Dave Fee  
 Amy Biggs  
 Janet Bilyew  
 Margy Birdwell  
 Bruce Blalock in Support of Wilma Lake  
 Susan Blaugh  
 Pamela Blauser in Support of Kevin Miller's family  
 Renee Bleke in Support of Shirley Salomon  
 Gayle Bloom  
 Doris Blue in Support of FWSUMC  
 Jim & Jocslyn Blum  
 Heather Blundall in Memory of Chris Larko  
 Ann Bobilya in Memory of Velma Bobilya and  
 Mary Ellen Johnson  
 David Bobilya  
 Tim Borne in Honor of Tom Horton  
 Mary Bower  
 Joan Bowers in Memory of Erma Jean Bowers  
 Pam & Dave Boyko in Support of Mary Jo Wolf  
 Doris Bracht  
 Carol Bradley in Support of Patti Teegardin  
 Frank Bradley  
 Matthew Brady in Memory of Pamela Brady  
 Kelly Bransteter in Support of Mary Jo  
 Daniel & Diane Brenner in Support of Dave Fee  
 Donna Brickley in Support of Doug Hofherr  
 John Brita in Memory of Rocco and Rose DiBrita  
 Carol Brockmeyer in Memory of Betty R. Reber  
 Cheryl Brown in Memory of Kent Roudebush  
 Lois Brown in Support of Wilma Lake  
 Timothy Brown  
 Mary Brueggemann  
 Rodd Bunch Family in Memory of Patty Bunch  
 Brandon and Elizabeth Bunt in Support of Donna Kaiser  
 Denise, Eric & Oliver Burch  
 Inez Burch  
 Doug Burdick in Support of Jeff Hamilton  
 Ralph Burgess  
 Jill Burnett  
 Katie Burrows  
 Kimberly Burton in Honor of Jeanette Shamblen  
 and Milton Crouch  
 Kimberly Burton in Support of Jeff Hamilton  
 Joe Byers  
 Chris Byers  
 Royal and Eva Bynum in Support of City Clerk Gang  
 Chris Caggiano in Honor of Chris Larko  
 Kathryn Callen in Support of Dave Fee  
 Del Campbell  
 Debra Campos in Honor of Mary Jo  
 Andy Candor  
 Linda Carnall  
 RD Carpenter in Support of John & Gerry Teders  
 Janis Carr in Support of Patti Teegardin  
 Mary Frances Carter  
 Stephanie Carter  
 Claudia Casiano in Memory of Denise Sigworth  
 Linda Casto in Support of Peggy Hogue  
 The Chapel in Support of The Chapel Lappers  
 Brian & Sherry Chapman  
 Amie Chapman



Shelley Chapman  
 Leah Chester  
 Shelly Christian in Support of Kelli Richards  
 Valerie Churchill  
 Debbie Clark  
 Jackie Claussen  
 Evelyn Clay in Support of Patti Teegardin  
 Betty Claymiller in Support of Dave Fee  
 Kathi J. Clifton  
 Mark & Becky Clough  
 Patty Coffelt in Honor of Michael Sizemore  
 Elissa Cohen  
 Bruce Cole in Memory of Mary Jane Newkirk  
 Jack Cole in Honor of Virginia Cole  
 Troy Cole in Memory of Gordon Schwanze  
 Angie Coleman in Honor of Grandpa  
 Ann Colwell  
 Deborah Conklin in Honor of Betsy Conklin  
 Mike Conley in Support of Mary Jo Wolf  
 Judy Conn in Support of Jennifer Himes  
 Martha Connell in Memory of Marilyn Fisher  
 Richard Coslow  
 Todd Cotham in Honor of Mary Jo Wolf  
 Rosie Coyle in Support of Sandra Kennedy  
 Lori Crabill  
 Caitlin Craig  
 James Creech in Memory of Nancy Bland  
 Virginia Crouse in Support of Rebecca Rutkowski  
 Bernadette Csernik in Support of Rebecca Rutkowski  
 Scott and Cheryl Dafforn in Memory of Koryn Dafforn  
 Sarah Daley in Honor of Mary Jo Wolf  
 Louis Dasher in Support of Wilma Lake  
 Jennifer Dauscher in Memory of both my  
 grandmothers with love  
 Dave and Debbie in Support of Jim Krewson  
 Angie Davis in Memory of Pat & Bob Kennedy  
 Jack Davis  
 Linda Denney in Support of Wilma Lake  
 Timothy Devereaux in Support of Mary Jo  
 Francie DeVries in Honor of Mary Jo Wolf  
 Gloria Diaz  
 Nan DiGangi in Memory of Mikey  
 Cheryl Dillman  
 Danielle Dillon



Julia Dillon  
 Jon Dize in Support of Wilma Lake  
 Mark Donaldson in Support of Russ Scribner  
 Melissa Doreff  
 Peggy Dorris in Support of James Krewson  
 Pat Douthit in Honor of Mary Jo Wolf  
 Sandy Drees  
 Kelly Dreibelbis in Support of Dave Fee  
 Trisha Drummond  
 Larry Duhamell in Support of Sandy Kennedy  
 Peggy Duncan in Support of Jeannie Stevens  
 James Dunivan in Honor of The Lake Family  
 Stephenie Dunne in Memory of Jean A. Dunne  
 Eric Durnell in Support of Debbie Durnell  
 Kyle Durnell in Support of Debbie Durnell  
 Phil Dwire in Honor of Aliegha Sweet  
 The Ecenbargers  
 Emily Ecenbarger in Memory of Dave Ecenbarger  
 Terri Ecenbarger in Memory of Dave Ecenbarger  
 Todd Edwards in Memory of Chris Larko  
 Donna Egbers in Honor of Donna Kaiser  
 Kelly Elbert in Support of Jeannie Stevens  
 Carole Elder in Support of Deb Durnell  
 Jeff and Jamie Ellenberger in Support of Ruth Schullien  
 Eric & Kathy Ellet in Support of all who  
 fight the good fight!!  
 Eric & Heidi Emley in Support of Austin & Jolyn Pitzer  
 Greg Emrick in Memory of Mary Emrick  
 Lisa Endres  
 Melinda Enstrom in Support of Donna Kaiser  
 Nadejda Eshcoff  
 Diedra Eshcoff  
 Harold & Gail Essmaker in Support of Russ Scribner  
 Jack Esterline in Support of Marla Esterline  
 Marla Esterline  
 Tom Esterline in Support of Marla Esterline  
 Monica Etter in Support of Becky Rutkowski  
 Heather Evans  
 Carolyn Ewing in Support of Bruce Ewing  
 Rob Ewing in Support of Tim Durnell  
 Bonnie Fairfield  
 Your Family in Honor of Ron Dearing  
 Noel Fane in Support of Angie Zelt  
 Kay Farber in Support of Gail Hamm  
 Jay & Peggy Farlow in Memory of Chris Larko  
 Carol Fausnaugh in Memory of Mike Kopp  
 The Fee's in Honor of Staff at Cancer Services  
 Dave & Yvonne Fee in Support of Bonnie Stebing  
 Dave & Yvonne Fee in Support of Austin & Jolyn Pitzer  
 Frank Feichter  
 Valli Ferrell  
 Star Fetter  
 Jeff Fields in Support of Julie Bunch  
 Mr. & Mrs. Jim Finchum



Thomas Fink  
 Jeri Fireoed in Memory of Pat Kennedy  
 Larry & Barb Fisher  
 Jack Flanigan  
 Sarah Fletcher  
 Anne & Dean Fogel  
 Carolyn Fowler in Support of FWSUMC  
 Laurie Fox in Support of Donna Kaiser  
 Robert Fraser in Memory of Fred & Mary Fraser  
 Rev. Dick Frazier in Support of Amber Recker  
 Fremont Youth & Community Outreach, Inc.  
 in Support of Darbie Clark  
 Tim and Brigid Frey in Support of Dave Fee  
 Angel Friedrich in Honor of Boppa!  
 Kevin Fry in Memory of Keith Fry  
 Angie Fulk  
 Ruth Furman  
 Cynthia Gaff in Support of Sandy Kennedy  
 Tom Gallmeyer in Support of Tom Horton  
 Ashley Gambill in Memory of Kent J Roudebush  
 Lauren Garber in Memory of Don and Marcia Coffey  
 Dave Garretson in Support of Team Kent  
 Marcia & Andrew Garringer in Support of Nancy Kopp  
 Shelbee Gatchell in Honor of Grandpa  
 Carol Gates  
 Sherm Gayheart  
 Kimberly Gaze in Memory of Thomas J. Wright  
 Mark Gengler  
 Mark & Debra Gengler in Support of Bonnie Stebing  
 Paul Gick in Support of Sarah Fletcher  
 Linda Gillen in Honor of all women touched by cancer  
 Christina Gilliom in Memory of Donald H. Weber  
 Gary Gilliom in Memory of Donald H. Weber  
 Lynne Gilmore in Support of Jeannie Stevens  
 Suzanne Gilson in Support of Dave Fee  
 Dr. Justina Girod in Support of John & Gerry Teders  
 Cynthia Glass in Memory of Jack Glass  
 Jeffery Glass in Honor of Jack Glass  
 Denise Glasser in Memory of Bruce Longardner  
 Godschalk Investments in Support of Kelli Richards  
 Barbara Goes in Support of Rebecca Rutkowski  
 Selina Goings  
 Jeff & Laurinda Goode  
 Lisa Goodman in Honor of Mary Jo Wolf  
 Cassie Graber  
 Peggy Graft in Memory of Myra Oswald  
 Marilyn Green in Memory of Thomas Green  
 Susan Green  
 Johny Greensleeves in Support of Marla Esterline  
 Julie Gremaux in Memory of Bonnie Kohrman  
 Peggy Griffin  
 Kathy Grillo  
 Earleen Grinager  
 Trisha Groholski  
 John & Steve Grove in Memory of Thomas Grove  
 Melissa Grove in Honor of Tom Grove  
 Michael Grove in Memory of Tom Grove  
 Jackie Groves in Support of Wilma Lake  
 Judy Gump in Support of Terri Roberts  
 Jerry Gunder in Honor of Jennifer & Jeremy Smith  
 Juan Gutierrez  
 Sue & John Hackman in Support of Donna Kaiser  
 Hazel Hale in Support of Carol Morris  
 in honor of Vicki Taylor  
 James Haley  
 Brandon Hall  
 Colleen Hall in Memory of Mike Kopp  
 Gary Hall  
 Karla Hall  
 Penny Hall  
 David & Jean Hamilton in Support of Jeff Hamilton  
 Karrie Hamilton in Memory of Gloria & Jo & Baker  
 Rod & Jenni Hamilton in Honor of Jeanne Hamilton  
 Shawnda & Jeff Hamilton in Support of  
 "Kids That Care" Team  
 Gail Hamm  
 Doug Hanes  
 Lou Harkenrider in Honor of Mary Jo Wolf  
 Kathy Harman in Support of Team Kent  
 Loretta Harris in Memory of Loved Ones



Melinda Harris in Memory of Kay Roberts  
 Luana Haskell in Support of FWSUMC  
 MaeBelle Havens in Support of FWSUMC  
 Barbara Hawn in Memory of Mike Kopp  
 Peggy Hayden in Memory of Kent  
 Peggy Hayden in Support of All those who battle cancer  
 Michael Hebert in Memory of Jim Weiks  
 Roxie Heck  
 Troy Heisler  
 Caroline Helmkamp in Support of  
 "Cruising for the Cure"  
 Sandra Herman  
 Phyllis Hermann  
 Fracine & Barry Hertel in Support of Ginny Clark  
 Esther Hill in Honor of Jennifer Rutkowski  
 & Mary Jones  
 Karen Hill  
 Lena Hill  
 Jessica Hillegass in Honor of Irene McKinley and  
 Michael McKinley  
 Kurt and Rebecca Hillyard in Support of Dave Fee  
 John Hitzley in Support of Donna Kaiser  
 Jennifer Himes in Support of Kelli Richards  
 Michael Himes  
 Mel Hochstetler in Support of FWSUMC  
 Lori Hoffman in Memory of Cal Brueggemann  
 Karla Hofherr  
 Douglas Hofherr in Support of Phyllis Reinking  
 Lauren Hoghe  
 Peggy Hoghe in Honor of Cheryl Jordan  
 and Susan McKean  
 Joyce Holland  
 Linda Hollman  
 Carolyn Holsworth  
 Chris Hooten in Honor of Vicki Taylor  
 Rob Hooten in Honor of Vicki Taylor  
 Gay Hoover in Memory of Chris Larko  
 Lois & Richard Horn in Support of John  
 & Gerry Teders  
 Norma Lee Hornbeck in Support of Linda Johnson  
 Kimberly Howe in Support of Jeannie Stevens  
 Jannice & Charles Hubbard  
 Lisa Hubbell in Support of Sandy Kennedy  
 George Huber  
 Kay & Leonard Huffman in Support of  
 Sandy Kennedy  
 Susan Huffman in Support of Becky Rutkowski  
 Mike & Joellen Ionni in Memory of Kent Roudebush  
 John Jackson  
 John Jackson in Support of Linda Pulver  
 Lisa Jackson  
 June Jacobs  
 Suzi James in Support of Patti Teegardin  
 Bruce & Sandy Jarrell  
 Stephanie Jentgen in Support of  
 Jennifer Rutkowski-Smith  
 Carol Jockel  
 Joe & Diane in Support of Nancy Kopp  
 Jeff & Maryann Johns  
 Ann Johnson  
 Jona Johnson in Memory of Kristi Wolfe Crawford  
 Ken Johnson  
 Kim Johnson  
 Linda Johnson  
 Linda Johnson in Support of Serena Hoffman  
 Loretta Johnson in Support of City Clerk Gang

Lynette Johnson in Support of Amber Recker  
 Susan Johnson  
 Carolyn Jones  
 Dimitry Jones in Honor of Jeremy,  
 Jen-nen-er and Grandma  
 Kay Jones in Honor of David Jones  
 Kay Jones in Honor of Pat Kennedy  
 Kim Jones in Support of City Clerk Gang  
 Nancy Jordan  
 Carolyn Juergens  
 Kristin Jumer in Support of Emily Mahoney  
 Just Sue Graphic Design, Inc.  
 Donna Kaiser in Support of CSNI  
 Doug, Suzanne & Family in Honor of Donna Kaiser  
 Florette Kaiser in Memory of Mildred F. Letz  
 Mark Kaiser  
 Matthew Kaiser  
 Tom Kaiser in Honor of Donna Kaiser  
 Tom Kaiser in Memory of Marie Kaiser  
 Greg Kaiser  
 Sharon Kammeyer  
 Julie Karst  
 Anton & Nancy Kassing in support of Linda Bewley  
 Kathy Kaufman in Support of Donna Kaiser  
 Jessica Keathley in Support of Diedra & Tim Eshcoff  
 Kelli Keaton  
 David Keaveney in Support of Team Kent  
 Bradley Kennedy in Support of Sandy Kennedy  
 Sandra Kennedy in Memory of Pat & Bob Kennedy  
 Alex Kiefer in Support of Wilma Lake  
 Cassandra Kilgore in Memory of David Mentzer  
 Diane King  
 Maggie Kleber  
 Todd Kleinrichert in Support of Russ Scribner  
 Kathleen Klenke in Support of Gail Hamm  
 Nancy Kline in Support of Marla Esterline  
 Lynn Knapp in Support of Amber Recker  
 Tisha Knott in Honor of Regina Runkle-MOM!  
 James & Janice Koday  
 Maureen Koester in Support of Melissa Sliger  
 Gina Koldyke  
 Kyle Koob in Support of Jeff Hamilton  
 Nancy Kopp in Memory of Mike P Kopp  
 Vic Kopp in Memory of Mike Kopp  
 Gina Kostoff in Memory of Marie Kostoff,  
 Luba Kostoff and Vesta Hoffmann  
 Beth Kramer in Memory of Kent Roudebush  
 Kathy Kreager in Support of Marla Esterline  
 Ann Kreamer in Support of FWSUMC

David Kresser  
 John & Janet Kresser in Memory of Diana Kresser  
 N. Joseph Kresser in Honor of Diana Maria Kresser  
 Tom Kresser  
 Tony Kresser  
 Brett and Karen in Support of Uncle Jim  
 Louis Krock in Memory of Ron Krock  
 Nancy Krugh in Memory of Ralph, RoseAnn, Ken,  
 Connie & Monique Post  
 Judith Kuelling in Support of FWSUMC  
 Larry Kumfer in Support of Melvin Smith  
 Bob & Linda Kunkel  
 Fran Kuzeff in Support of Wilma Lake  
 Cari Kyle  
 Keith & Wilma Lake in Support of Faithful Friends  
 Floyd Lancia in Support of Amber Recker  
 Carol Lantz in Support of Kim Johnson  
 Ann Larmore in Honor of Jan Larmore  
 Elizabeth Learnard  
 George and Rosemary Lebamoff  
 Jill Lepper  
 Ronald & Sharon Lewellyn in Support of  
 James Krewson  
 Linda Lewis in Support of Jeannie Stevens  
 Tammy Lewis in Support of Jeannie Stevens  
 Tara Lewis in Support of Jeannie Stevens  
 Jeffrey Lindsey in Honor of Chris Larko  
 Daniel Lion  
 Roberta Lockwood in Support of Wilma Lake  
 The Lomellin Family in Support of Erin Roudebush  
 Nancy Longmate  
 Cathy Luttenbacher  
 Becky Lyon in Support of Mary Jo Wolf  
 Kent Mahnesmith  
 Debbie Mahoney in Support of Emily Mahoney  
 Emily Mahoney  
 Mandie, Gina, Paula in Memory of Mother lost to cancer  
 Eleanor Marine  
 Simmons Mark  
 Mr. and Mrs. Ron Marker in Honor of Joy Robbins  
 Brandy Marley in Memory of Mikey Kopp  
 Jimmy Marley in Memory of Mikey Kopp  
 Rachel Marley in Honor of Mikey  
 Sandy Marlowe in Memory of Gene Krouse  
 Steven Marlowe in Support of all of us survivors  
 Colleen Marshall  
 Dianna Martin  
 Theresa Masanz  
 Matt & Angie in Honor of Shirley Wyss



Jason Maxfield in Support of Bonnie Stebing  
 Dianne May in Honor of Lake family members  
 touched by cancer  
 Jessica Mayo in Memory of Marsha Schwab  
 Larry McClintock in Honor of Linda Bewley  
 Mick McCollum in Honor of Tom Horton  
 Cynthia & Dick McCrory in Support of Linda Pulver  
 Maureen McGary  
 Heather McGinnis  
 Phil McKenzie in Honor of Barbara Weisserman  
 and Shirley Ramaley  
 Shannon McNett-Silcox  
 Tiffany McPheters  
 Linda Means  
 Fran Mefford  
 Joanne Menter in Honor of my long time friend, Donna  
 Susan Meyer in Support of Tom Horton  
 Sharon Meyers  
 A.E. & Charlotte Miller in Support of Dave Fee  
 Bob & Cindy Miller in Honor of Jim Krewson  
 Connie Miller  
 Justin & Lissa Miller  
 Lynette Miller in Honor of Edith Miller  
 Cheryl Milligan in Honor of Donna Kaiser  
 Stephanie Milner in Support of Mary Jo Wolf  
 Gordy & Christy Mitchell in Support of Gail Hamm  
 Roger Mitchell in Support of Rutkowski family  
 Al & Cathy Moll in Support of  
 The family of Sandy Kennedy  
 Lynnet Mondt  
 Jacki Moore in Support of Bruce Ewing  
 Patricia Moorman in Support of Dave Fee  
 James and Martha Morris in Honor of Vicki Taylor  
 Julie Morris in Honor of Stone Family & Friends  
 Debora Morrone in Support of City Clerk Gang  
 Karen Morrow in Honor of My Daughter Jennifer –  
 What An Inspiration!  
 Kerry Mumma  
 David and Robin Munro  
 Connie Murphy in Memory of Linda Thorpe  
 Jason Murphy in Honor of Becky Rutkowski's Mother  
 Lori Murray in Support of Diedra & Tim Eshcoff  
 Gene & Allison Mutton in Support of Bonnie Stebing  
 Sue Nahrwold in Honor of Stone Family & Friends  
 Louva Needham in Support of FWSUMC  
 Lisa Neely  
 Laura Nerenberg in Honor of my husband Bruce  
 Rachel Newman  
 Dan Nieter in Support of Dave Fee  
 Barbara Niezer  
 Jerry Niezer family in Memory of Kent Roudebush  
 Debbie Noll  
 Rebecca Norton  
 Donn Novotny  
 Jenny Noye in Support of Nancy Wisel  
 Ann O'Day in Memory of Donald H. Weber  
 Stephen & Brenda O'Looney  
 Tom & Sue Obrien in Support of Donna Kaiser  
 Indigo Printing and Graphics, Inc.  
 George Ogg  
 Pamela Ohneck in Honor of Mary Jo Wolf and  
 Dana Happel  
 Shelley Ohneck in Support of Patti Teegardin

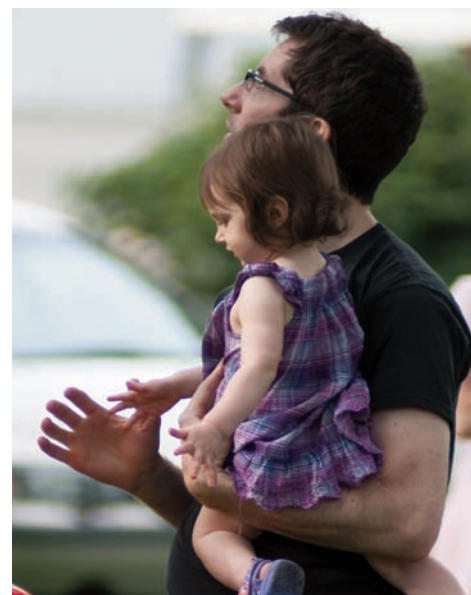




Karen Oldsen in Support of Rebecca Rutkowski  
 Cletus & Anne Olinger in Honor of Tom Grove  
 Janet Olson  
 Jennifer Osborn  
 Charla Palmer in Memory of Kent Roudebush  
 Chris Palmer in Support of Jeannie Stevens  
 Mr. & Mrs. Lee Parker  
 Mac & Pat Parker in Support of Tom Horton  
 Dylan Parks  
 Greg Patten in Memory of Chris Larko  
 Andrea Patterson in Honor of Mary Jo Wolf  
 Brad & Amy Peckinpugh  
 Kim and Ken Pedersen  
 Julie Pelikan in Honor of Mona Reed  
 Audrey Pelsor  
 Colleen Pentsos  
 Barrie Peterson in Support of Amber Recker  
 David and Cherry Peterson in Support of  
 Terri Roberts  
 Kathy Peterson in Honor of Diana Kresser  
 Dan Petrovich in Support of Donna Kaiser  
 Brandi Pettigrew  
 Rachel Pfeiffer  
 Janie Pierce in Honor of Donna Kaiser  
 Austin Pitzer  
 Randy & Pat Pitzer in Support of Austin  
 & Jolyn Pitzer  
 Charles Powell in Support of Wilma Lake  
 Mr. & Mrs. David Proudrier  
 Cheri Pruitt in Honor of James Krewson  
 Steve Pulley in Support of Brandon Bower  
 Shelley Pulver in Honor of Mary Jo Wolf  
 Hilary Quint in Support of Sandra Herman  
 Lois Raber in Support of FWSUMC  
 Karen Rahrch in Memory of Mike Kopp  
 Jill Ramsey in Honor of Husband, mother, sister  
 Amber Recker  
 Daniel Reed  
 Betty Rekeweg in Support of Wilma Lake  
 Nettie Rekeweg  
 Karen Renner in Support of Barb Eler  
 Laramie Resler in Support of Linda Bewley  
 David Restemayer in Support of Ginny Clark  
 Pam Reyburn in Honor of Mary Jo Wolf  
 Marcia Reynolds  
 Robert Rhee in Honor of Monica Groleau  
 Ike & Sue Richards  
 Kelli Richards in Memory of Chris Larko, My Love  
 Mary Richardson  
 Tim Rietdorf  
 Burt and Darlene Rimmel  
 David Ripple in Memory of Vicki Reber  
 Mr. & Mrs. Bill Ritchie  
 Cindy Ritter  
 Ron Roberts  
 Virginia Roberts  
 Gabe Robertson in Memory of  
 My Grandpa James Weiks  
 Shelley Robertson in Memory of My Dad  
 & James (Pork) Weiks  
 Nancy Rodewald in Support of Team Krewson  
 Pat Roller  
 Debra Ross in Honor of Mike Kopp  
 Peggy Roth in Memory of My Parents  
 Jim & Barb Rousseau in Support of Rita Wagner  
 Elaine Rowlett in Memory of My Uncle David,  
 My Grandpa Kuklinski & Chris Larko  
 Barbara Roy in Support of John & Gerry Teders  
 Kathy Roy in Honor of Frank J. Verhaegen  
 Mr. & Mrs. James Runkle in Honor of  
 Regina A Runkle  
 Jennifer Rutkowski-Smith in Honor of my husband  
 Jeremy and memory of Grandma Jones  
 Rebecca L Rutkowski in Honor of  
 My daughter Jennifer  
 Kathy Ryan in Memory of Annie Hart  
 Timothy Ryan in Memory of James Ryan  
 Steve & Sue Sablic  
 Judy Sachen in Honor of Mikey Kopp  
 Patricia Sager in Honor of Sally Stone

Ronda Salge in Support of Brandon Bower  
 Matthew Salyer in Support of Angela Salyer  
 Nancy Sanders in Honor of Jolie's Dad  
 Pamela Saylor in Memory of Cheri Miller  
 Thomas Scare in Memory of Mike Kopp  
 Janet Schasker in Memory of Bob Schasker  
 Steven Schimmele in Support of Tim Durnell  
 Cindy & Al Schmidt  
 Jack Schmidt  
 Susan Schowe in Honor of Mary Lou Wisler  
 Margaret & Ronald Schrein in Support of  
 Nancy Kopp  
 Charles Schrimper in Support of Leigh Smith  
 Jill Schriner in Support of Angie Zelt  
 Ruth Schulien in Memory of Ralph Westerman  
 Stevan Schulien  
 Beverly Scott in Memory of Robert A. King  
 Audra Scribner in Honor of Earnie Kesner  
 Russ Scribner in Honor of Ernie Kesner  
 Bill Seidel  
 Peggy Shaffer in Memory of Neil Bracht  
 Shambaugh & Son, L.P.  
 Rose Shanebrook  
 Chris Shatto  
 Judy Shaw  
 Shelba Jean Shaw  
 Mark Sherbondy  
 Carolyn & Bill Shininger  
 Bev Shipley in Memory of Chris Larko  
 Ann Shive  
 Sharon Shumaker in Memory of Walter Furnas  
 Sharon Simmons  
 SIRVA IN ACTION in Support of SIRVA Striders  
 Judith Skafish in Memory of Helen and Bill Skafish  
 Lori Slee in Support of Sandy Kennedy  
 Melissa Sliker  
 Carla Smeltzley  
 Susan Smethers in Honor of Linda Knappenberger  
 David Smith in Support of James Krewson  
 Dennis Smith in Honor of Jeremy & Jennifer Smith  
 Federa Smith in Support of Patti Teegardin  
 Leigh and Debbi Smith in Honor of Al, Eileen,  
 Randy and Ed  
 Marc Smith  
 Melvin Smith  
 John Snider in Support of Jim Krewson  
 Kari Snyder  
 Lynn Snyder in Memory of Gerald A. Snyder, Jr.  
 Dr. Rajiv & Mrs. Courtney Sood in Support of  
 Donna Kaiser  
 Lisa Sordelet in Memory of Mike Kopp  
 Loralye Sorum  
 Bonnie Stebing in Honor of  
 Great Grandpa Everett Stebing  
 Frank G. Souder Inc. in Support of Bonnie Stebing  
 Mary Southern in Memory of Marcia Skelly  
 Cindy Spisak  
 Betty Spruill  
 Kim Stacey in Support of David Fee  
 Patricia Stahlhut  
 Becky Stair  
 Jim Stanley  
 Alexandra Starkey  
 Julie Starkey in Memory of Mary Lou Wisler  
 Bonnie Stebing  
 Larry & Bea Stebing in Support of Bonnie Stebing  
 Ruth Stebing  
 Kristy Stemen in Support of Jeannie Stevens  
 Harriet Stennfeld in Support of Wilma Lake  
 Janet Stephenson in Honor of Margaret Dibert  
 and Doris Paurice  
 Brian Stolte in Support of Bonnie Stebing  
 Terri Storer in Memory of My Dad James F. Weiks  
 Donna Strahm in Honor of Miriam Rini  
 Sarah Strimmenos in Memory of Beverly Roach  
 Luke Sullivan in Memory of John and  
 Dorothy Gensic and Bill Sullivan  
 Sonie Sunday  
 Sue Sunderman  
 Susie Swaidner in Memory of Tom Grove

Ry and Laura Taliaferro in Memory of  
 Meg Bierbaum  
 Annette Teders in honor of my Daughter  
 Geraldine Teders  
 John Teders  
 Mike & Terri Teders in Support of John  
 & Gerry Teders  
 Patti Teegardin  
 Cathy Teeters  
 Carole Tenbarge  
 Susan Terfler in Memory of Ruth Doddridge  
 Susan Terfler  
 Billie Thomas  
 Rev. Hal Thomas in Support of James Krewson  
 Jim & Toni Thompson in Honor of Barb Thompson  
 & Donna  
 Toni Thompson in Honor of Donna, Barb & Peg  
 Sherri Thorp in Support of Austin & Jolyn Pitzer  
 Alan Thorp in Support of Austin & Jolyn Pitzer  
 Kelly Tippmann in Memory of Kent Roudebush  
 Sonja Tittman  
 Rick & Laura Tomlinson in Support of Dave Fee  
 Karin Tone in Honor of Donna Kaiser  
 Sandy Tone  
 Helen Topp  
 Alan Toy in Support of Kevin Saylor  
 Dennis Tratnyek  
 David Trenkner  
 Dennis Tropp in Support of Sandra Kennedy  
 Cindy Trygg  
 Rachel Trygg  
 Cheryl Tucker  
 William Tucker  
 Pat Tuttle in Support of Wilma Lake  
 Sharon Ulrich in Support of Team Kent  
 Kelly Updike  
 Alex Vagelatos in Honor of Mary Jo  
 Connie Vannucci in Support of Peggy Hoghe  
 Mark Veerkamp  
 Mary & Michael Veth in Support of Team Kent  
 Susan Voigt  
 Kathryn Wagner in Support of Rita Wagner  
 Rita Wagner  
 Robert & Elsa Wagner in Support of Dave Fee  
 William Wallace  
 Jane Walton  
 Kathleen Ward  
 Randy Warner in Memory of Carolyn Warner  
 Tara Warner  
 Phyllis Waters in Honor of Paula Cassaday  
 David Weber in Memory of Donald H. Weber  
 Donna Weber in Memory of Donald H. Weber  
 Karen Weber in Memory of Donald H. Weber



Lynn Weemes in Memory of Robert A. King  
 Jeff Weiks  
 Jimmy Weiks in Honor of James F Weiks  
 Keifer Weiks  
 Mary Weiks in Honor of James F. Weiks  
 Paula Weiks  
 Sierra Weiks  
 Wade Weiks  
 Jim & Shirley Wellborn  
 Jani Welling in Support of Doug Hof herr  
 Penny Wells in Honor of Cheryl Hall  
 Jill & Keith Werling in Honor of Diana Kresser  
 & Anne Gage  
 Keith and Jill Werling in Memory of Diana Kresser  
 Lynne Westerman in Memory of Elmer Barton  
 Carl White  
 Anita White  
 Mark Whittecar in Support of Marla Esterline  
 Michael and Virginia Wilkins in Support of  
 Linda Bewley  
 Norma Wilkinson in Support of Wilma Lake  
 Jim & Shirley Williams  
 Linda Williams in Honor of Mary Jo Wolf  
 Sara Williams in Support of Emily Mahoney  
 Stephen & Sharon Williams in Support of Dave Fee  
 Angie Wilson in Support of Angie Zelt  
 Cheryl Wilson in Support of FWSUMC  
 Tonya Wine in Memory of Jean Kerr, Phyllis Kerr,  
 Barb Messmann and Chris Larko  
 Susan Winebrenner  
 Margie Winn in Support of Wilma Lake  
 Nancy Wisel in Honor of Marcia Garringer

Jerry Witte in Memory of Kent Roudebush  
 Jill Witte in Memory of Kent Roudebush  
 Judy Witte in Memory of Kent Roudebush  
 Kris Witte in Support of Team Kent  
 Mark Witte in Support of Team Kent  
 Patricia Witte  
 Stephanie Witte in Memory of David Haney  
 Thomas Witte in Memory of Kent Roudebush  
 Mary Jo Wolf  
 Paul and Carrie Wolseley in Honor of  
 Phyllis Reinking  
 Women's Bureau  
 Dorothy Woodruff in Support of Carol Morris  
 Becky Woolman  
 C. Robin Wright in Support of Debbie Durnell  
 Bill Wyatt  
 JoAnn Wyatt  
 Mary Yarnelle in Support of Patti Teegardin  
 Sheryl Yoder in Memory of Nancy Housholder  
 Gale York-Vorndran  
 Dave & Deb Young in Support of Melvin Smith  
 Peter Zonakis  
 Beverly Zuber in Support of City Clerk Gang

### Lapper Sponsors ...

Bewley & Koday  
 C. Philip Andorfer  
 Sycamore Village  
 P.E.T. Fusion Imaging  
 Michael Cassaday  
 Roger R. Werling

Subway Systems, Inc.  
 Tom M. Stafford, MD  
 M-D Choice Medical Supply  
 Bonnie & Ron Stebing  
 Balloon Works  
 Grabill Cabinet Company  
 DeMoney-Grimes Funeral Home  
 Allstar Communications  
 Tower Trust Company  
 Mike's Car Wash  
 Pizza Hut of Fort Wayne, Inc.  
 JAT of Fort Wayne, Inc.  
 Mannia Green LLP  
 RESCARE Northern Indiana  
 V102.9  
 Parkview Comprehensive Cancer Center  
 Kroger/Scotts  
 Vera Bradley  
 Mattress Warehouse  
 PHP  
 Parkview Noble Hospital  
 Brooks Construction  
 C Henry Steel  
 Steel Dynamics, Inc.  
 Keefer Printing, Inc.  
 Parrot Press  
 Radiation Oncology Association  
 Walmart  
 U.S. 93.9  
 dD Photography  
 All Occasions  
 B. Antonio's Pizza

## DOES YOUR EMPLOYER MATCH CHARITABLE GIFTS?

Some corporations support the causes and organizations most important to their employees by providing matching financial contributions or a contribution based on volunteer time spent. Gifts like these can really add up. Ask your human resources department to see if your employer offers a plan like this.



### Foundation & Trust Giving

*Giving between 6/1/2010 - 7/31/2010*

American Express Foundation  
 Carlie Cunningham Foundation  
 Edward D. and Ione Auer Foundation  
 English Bonter Mitchell Foundation  
 Hesemeyer Foundation  
 Ronald G. Repka Foundation, Inc.  
 St. Joseph Community Health Foundation  
 Steuben County Community Foundation

### Corporate and Organizational Donors

*Giving between 6/1/2010 - 7/31/2010*

All Electric  
 Blind Faith Inc.  
 Front Desk Software, LLC  
 HVAC Systems Service, Inc.  
 Lincoln Financial Group  
 N.B. Knapke Company, Inc.  
 Salin Bank & Trust Co.  
 Steel Dynamics, Inc.  
 The Rogers Company  
 United Way of DeKalb County, Inc.  
 United Way of Huntington County  
 United Way of Tri-State  
 United Way of Wells County  
 Wells Fargo Community Support Campaign



*DVD's of our Mere Mortals event  
 are available in our library.  
 Please call (260) 484-9560  
 for more information.*

## General Contributions

Giving between 6/1/2010 - 7/31/2010

Mr. and Mrs. Robert Barnes  
Mr. Verlin A. Beck  
Ms. Pat Beisner  
Mr. Jim Benya  
Mr. John E. Books  
Mr. D.F. Brannon  
Christ Methodist Women's Fellowship  
Ms. Genny M. Daly  
Mr. and Mrs. Kenneth DeBrosse  
Mr. and Mrs. Dale E. Dietz  
Mr. and Mrs. Fred W. Domrow  
Mr. and Mrs. Franklin Fyock  
Mrs. Sandra K. Gast  
Mr. and Mrs. Frank Guenin  
Mr. and Mrs. Lee Harges  
Mr. Robert Heiny  
Mr. and Mrs. Roland G. Keuneke  
Mr. Willie G. McGrady  
Mr. William H. Oberwitte  
Mr. and Mrs. Lavern Roth  
Ms. Dorothy J. Scalpi  
Mr. and Mrs. Howard Schwartz  
Mr. and Mrs. Albert Slater  
Dr. Arline Standley  
Mr. and Mrs. Eugene Stutzman  
Ms. Sandra L. Van Horn  
Dr. Hermine J. van Nuis  
Mr. and Mrs. Gordon E. Walter  
Mr. Ralph E. Wehrly  
Ms. Pepper Wells  
Mrs. Rosemary Westrick  
Ms. Dawn A. Wiley  
Mr. Roger Wright  
Mr. and Mrs. Maurice Wyss  
Mrs. Doris J. Zwick

## In Honor Of ...

### Lois Steiner

Mrs. Bonnie M. Gibson  
**Volunteer Driver - Sandy**  
Ms. Rose J. Roberts

## In Memory Of ...

### Pauline E. Altman

Mr. and Mrs. Douglas Perry

### Jean Arnold

Ms. Helen Sieber  
**Richard K. Bollenbacher**  
Mr. and Ms. Tom Ahr  
Mr. and Mrs. Raymond Cain, Sr.  
Mrs. Dorothy Fritz  
Mr. and Mrs. Ross Gibbons  
Mr. Larry L. Hade  
Haworth Inc.  
Mr. and Mrs. James Hollowell  
Mr. and Mrs. Daniel Joyce  
Mr. and Mrs. Richard Kelly  
Mr. and Mrs. Jerry Siela  
Tippmann Heating and Air LLC  
Mr. and Mrs. Todd Warrix

### Ottorino E. Boreani

Mr. and Mrs. Micheal Borden  
Mr. and Mrs. Ronald Bridge  
Mr. Bruce Hayes  
Ms. Nellie B. Maloley

### Robert Borst

Mr. Willis Peachy  
**Duane A. Bultemeier**  
Certified Burglar & Alarm Systems, Inc

### Anna Burkhalter

Mr. and Mrs. Thomas Beauchot

### Treena L. Burner

Mr. and Mrs. Ronald J. Girardot

### Charles Byers

Arlington Elementary School

### Helen Centlivre

Mrs. Jeanne R. Schouweiler

### Geraldine L. Clark-Bodas

Mr. David Conley  
Mr. and Mrs. Ruben Conley  
Manchester Barber Shop  
Mr. and Mrs. Don Milliser

### Jon B. Crates

Mrs. Jeanie Crates

### Edward P. & Evelyn M. Derheimer

Mr. and Mrs. Bernard F Jozwiak

### Monty M. Dohse

Mrs. Barbara Blancet

### Robert E. Falls

Mr. and Mrs. Jerry E. Falls

### Family Members

Indigo Printing & Graphics, Inc.

### Kay M. Fansler

Avalon Swim & Dive Team

Mr. and Mrs. John R. Donovan

Mr. and Mrs. Steve Gonda

NE Chapter of ISPLS

### Bessie A. Fawley

Leo United Methodist Church

### Kimberly K. Freygang

Mr. and Mrs. Tom Gamble

Oakhurst Park Civic Assoc., Inc.

Mrs. Phyllis A. Sweet

### George Furman

Mr. Henry Furman

### Jack E. Gardt

Mr. and Mrs. Jeremy Bock

Mrs. Lois M. Devine

Ms. Lois Gardt

Ms. Veronica Gatchell

Mr. and Mrs. Sal Gentile

Mr. and Mrs. Gene Herran

Ms. Beverly Johnson

Mr. and Mrs. Dale Linnemeier

Mr. David Malcolm

Mr. and Mrs. Kenneth E. Niebel, Sr.

Mr. and Mrs. Wayne Polley

Mr. Rodger A. Rang

Ms. Janet Rison

Mr. and Mrs. Martin Scheimann

Ms. Jackie Schieferstein

Mr. and Mrs. Thomas Schrader

Mr. and Mrs. Walter Stafford

Mr. and Mrs. Morris Walchle

Ms. Ann Weaver

### Ben GiaQuinta

Mr. and Mrs. David Gigli

Indiana Builders Assoc., Inc

Mr. and Mrs. Bruce Lucia

Mr. & Mrs. Alvin R. Moll, Jr.

Parkview Health Systems

Mr. and Mrs. David L. Ruoff

Mr. and Mrs. David Seybert

Mr. Kenneth L. Stahl

Steel Dynamics, Inc.

UAW - Allen Co. CAP Council

Mr. & Mrs. Mike Wilkins

### Don A. Gordon

Mr. and Mrs. Lynn F. Bearman

Mr. and Mrs. Jeremy Friedt

Mr. Dan Gerardot

Ms. Eva Gerardot and Ms. Tammy Gerardot

Mr. and Mrs. Gary Knipstein

Mr. and Mrs. Joe Wagner

### Christina Gourlay

Mr. and Mrs. William A. Shifflett

### Karen A. Grable

Mr. Barry Grable

### Clarence E. Gray

Mr. and Mrs. David Dunlap

### Salli J. Haack

Mr. & Mrs. George Bewley

Ms. Marjorie Haack

Mr. and Mrs. Robert Harris

Mr. & Mrs. Tom Kaiser

Ms. Jill Knott

Mr. & Mrs. James Koday

Mr. and Mrs. Kenneth C. Lizer

Mr. and Mrs. Ronald Miller

Mr. & Mrs. Ken Terfler

### Konnie Helmuth

Mr. and Mrs. Richard A. Ruthsatz

### Richard D. Hinton

Knitting Together Ext. Homemakers

### Ida Holthouse

Mrs. Barbara J. Shumm

### William O. Hopkins

City of Angola, IN

Mrs. Sue Hopkins

Mr. and Mrs. Marlin Motycka

Orland Area Chamber of Commerce

Mrs. Donna J. Parrish  
Dr. and Mrs. Jay D. Patel  
Mr. and Mrs. Warren J. Wilhelm, Jr.

Mr. Donald S. Wilkinson and

Ms. Peggy Gaylord

### Doris E. Jennings

Ms. Karla Alexander

Mr. and Mrs. Richard Bienz

Mr. and Mrs. Wally Bultemeier

Ms. Kim Dietrich

Mr. Bud L. Dyer

Ms. Rose Frieburger

Mr. and Mrs. Richard Gatton

Mr. and Mrs. Jon Haberstock

Mr. and Mrs. Steven Harter

Mr. Steven Hickman

Mr. and Mrs. Mark Oetting

Mr. and Mrs. Lawrence Sauter

Mr. and Mrs. William Stein, Jr.

Mr. and Mrs. Mike Tagtmeyer

Mr. & Mrs. Robert A. Wagner

Mr. and Mrs. Calvin Wolff

### William H. Johnson

Mr. and Mrs. Melvin Kleine

### Joan Kelly

Ms. Mary Ann Creigh

### Vance D. Kiser

Erie Haven Inc. Drivers and Mechanics

### Diane M. Koehlinger

Mr. and Mrs. Charlie Baverman

Mr. & Mrs. George Bewley

Ms. Janel Dawes

Mr. and Mrs. Stephen Farrier

Mr. and Mrs. Adam Henry

Mr. and Mrs. Matthew R. Henry

Mr. and Mrs. John Hughes

Ice Miller, LLP

Ms. Sharon Jackson

Mr. and Mrs. Greg Koehlinger

Mr. and Mrs. Art Krauss

Mr. and Mrs. Ken Krauss

Mr. and Mrs. Derek Kulwicki

Mr. and Mrs. Timothy Murdock

Ms. Linda Pfeiffer

Ms. Pearl Rickard

Mr. and Mrs. Rudy J. Rossi

SAAL Advertising & Publishing

Mr. and Mrs. Jim Sabo

Ms. Laura Seward

Mr. and Mrs. David Steinhof

Ms. Margaret Stephens

Mr. and Mrs. Andrew Tridico

Mr. and Mrs. Terrence Warner

Ms. Sarah Witt

Ms. Barbara Young-Miller

### Patricia S. Kunkel

Dr. William A. Kunkel III

### Linda Lauer

Mr. David Lauer

### Donald G. Lloyd

The Cedars

Mr. and Mrs. R. W. Doig

Mr. George Getz

Grabill Cabinet Co.

Dr. and Mrs. Laurence Gray

Mr. and Mrs. Donald Gumm

Mr. and Mrs. Michael Heller

Ms. Alice Lloyd

Mr. and Mrs. Steven Longbrake

Mr. and Mrs. Roger McClure

Michael's Floor Covering

Midwest Oral & Maxillofacial Surgery

R.M. & M.R. Stetzel, D.D.S., Inc

Mr. and Mrs. Mark Sauder

Mr. and Mrs. Meredith Sauder

Mr. Mach Schwein

Dr. Gary Staadt and Dr. Mary Staadt

Mr. and Mrs. Richard Staadt

Ms. Maureen Strauss

Mrs. Doris Tancil

Dr. Gerald F. Ward

Mr. and Mrs. Martin Weissert

### James Luther

Mrs. Karon Luther

### Emma A. MacDonald

Mr. William MacDonald

### Jayne Martin

Mr. and Mrs. Mars Wolford

### John T. Menzie

Mr. and Mrs. W. Michael Horton

Mr. Clifford Sethness

### Patrick O'Brien

Mr. and Mrs. James Reichert

Mr. Paul F. Reichert

### Gerald Patterson

Mr. and Mrs. Dan Mauricio

### Gordon A. Perry

Mrs. Virginia Ladd

### Davis M. Phillips

Dr. and Mrs. James R. Platt

### Virgil "Bud" Pyle

Ms. Gail Hamm

Mr. and Mrs. John McGrew

Ms. Fonda Seewald

Mr. and Mrs. Gary L. Witte

### Gerald J. Ricker

Mr. and Mrs. Tom Weber

### Ronald B. Roberts

Mr. and Mrs. Stephen Alberding

Mr. and Mrs. Terry Bilger

Mr. and Mrs. James Carey

Ms. Patricia A. Hamilton

Mr. and Mrs. Manuel Perez, Sr.

Mr. and Mrs. Steve Shambaugh

Mr. and Mrs. David P. Stephans

Mr. and Mrs. Vince Williamson

### Elsie Rossman

Mr. Glenn A. Rossman

### Clarence E. Smith

Mrs. Hazel L. Smith

### Susan F. Smith

Mrs. Ruthanne Smith

### Tony Stanski

Ms. Janice Stanski

### Beecher Stephens

Ms. Marion Blosser

Mr. and Mrs. Robert Lemon

Mr. and Mrs. Daniel Rusmisl

### Janice K. Stephens

Mr. William Brune

Ms. Meena Edwards

### Marlene L. Stephenson

Ms. Helen Sieber

### Deborah Sutter

Mr. Robert Bollenbacher

Mr. and Mrs. William Bougher

Ms. R Kathleen Gurka

King & Scott, LLP

Ms. Iva Maldeney

Mr. and Mrs. Robert Maldeney

Mr. and Mrs. Richard Maledeney

Mr. and Mrs. Dale Sutter

### Galen Swogger

Mr. and Mrs. Don Buckler

### Jacqueline Trier

Ms. Fritz Ober

### Max A. Troutner

Mrs. Jeanette M. Troutner

### Violet E. Ungerer

Mr. and Mrs. Raymond O. Wolf

### Doris and James Vachon

Ms. Diane Vachon

### Jan S. Vick

Hirons & Company

Ms. Marilyn Jones

Mr. and Mrs. Jeremy Pfister

### Dorothy E. Weaver

Mr. and Mrs. Paul A. Lydy

Mr. and Mrs. Richard Lydy

Mr. and Mrs. Mark Shire

### Danny Wilson

Ms. Lin Wilson

### Robert Winkeljohn

Mrs. Diane Winkeljohn

### Gerard Zock

Mr. and Mrs. Gary L. Witte

## UNITED WAY DONORS

Ms. Sue A. Adams

Mr. and Mrs. Steven P. Alles

Mr. Matthew J. Altenburger

Mr. Gregory Andrews

Ms. Margaret M. Ankenbruck

Mr. Anthony A. Arsin

Mr. Lyndon B. Asher

Mr. Art Augspurger

Ms. Lynette Augspurger

Ms. Cynthia D. Bair  
Ms. Stella C. Batagiannis  
Mr. Larry Beavers  
Mr. John Beckman, Jr.  
Mr. Justin P. Bertrand  
Ms. Mary Beth Bloom  
Ms. Cherie Bostic  
Ms. Danielle Braun  
Ms. Christianne L. Brinneman  
Mr. and Mrs. Hal Broberg  
Mr. Jon M. Brubaker  
Mr. and Mrs. Frank A. Bryan  
Mr. James Buroff  
Mr. and Mrs. Mendall Campbell  
Mrs. Pamela Carmack  
Ms. Joan A. Carteaux  
Ms. Patricia Carteaux  
Mr. Scott A. Christen  
Mrs. Cheryl Clark  
Cary Cogdell  
Mr. Dennis I. Cottam  
Mrs. Melody A. Crossgrove  
Ms. Judy Delamarter  
Mr. Greg M. Dillion  
Mrs. Karla Dixon  
Mr. and Mrs. Terry Dixon  
Ms. Susan Duly  
Mr. Steven Ewart  
Mr. and Mrs. Patrick Fahey  
Ms. Tonika U. Ferrell  
Mr. Gary D. Fields  
Ms. Carol Flaugh  
Mrs. Donna R. Fordham  
Mr. Joseph Fox  
Ms. Ann Frazier  
Ms. Esperanza Frye  
Ms. Linnea Fulkerson  
Mr. Timothy P. Galbreath  
Ms. Maureen Galligan  
Mr. and Mrs. Brian S. Gallinger

Mr. and Mrs. Daniel A. Garman  
Mrs. Beth Garstka  
Lynn and Darrill Gerig  
Ms. Mary Goree  
Ms. Danielle F. Graham  
Mr. and Mrs. Paul Gregory  
Mrs. Deborah Griffith  
Ms. Susan Guck  
Mr. and Mrs. Stanley Hause  
Mrs. Suzanne Heck  
Mrs. Michele Herald  
Mr. and Mrs. Patrick Herman  
Mr. and Ms. David Highland  
Mrs. Trisha A. Hinen  
Mr. Timothy Hines  
Mr. Timothy Hoblet  
Mr. Amondo P. Hopkins  
Mr. and Mrs. Michael Howard  
Ms. Julie C. Howell  
Mrs. Deborah A. Johnson  
Mr. Jason F. Keesling  
Ms. Debra Keipper  
Ms. Rhonda Kelley  
Ms. Lisa M. Kent  
Ms. Kathleen Kijak  
Mr. and Mrs. Craig Klugman  
Mr. Allen Koehlinger  
Mr. Phil D. Kosmala  
Mrs. Kathy J. Kreager  
Mrs. Donna Lamaster  
Mrs. Reenae Lane  
Mr. Dale N. Lehman  
Mr. Robert Lenhart  
Ms. Lori M. Leonard  
Mr. Michael Lester  
Mr. Gerald S. Litchfield  
Mr. Michael S. Long  
Mrs. Kimberely E. Mack  
Mr. Donald Mann  
Mrs. Jeanne Marshall

Mr. Daniel E. Matter  
Mrs. Wendy McConnell  
Ms. Donna McEvoy  
Ms. Delphine McKinney  
Ms. Sara Meek  
Ms. Leslie Megison  
Ms. Mary Eileen Meyer  
Mr. Ernest Meyers  
Mrs. Molly Miller  
Mrs. Patti J. Moll  
Ms. Christine Moore  
Ms. Karen Sue Moreno  
Mr. Gregory D. Morrow  
Ms. Julianne M. Myers  
Mr. John Nolan  
Ms. Dawn Oetting  
Mr. Jeremy L. Peer  
Ms. Karen Pierstorff  
Mrs. Robin R. Plasterer  
Ms. Kizziah Polke  
Ms. Hope Rabi  
Mrs. Keli B. Reif  
Ms. Karen S. Rhoades  
Ms. Suzanne Louise Roberts  
Ms. Twila Robinson  
Mr. Sherwin B. Rosales  
Mr. Glenn A. Rossman  
Mr. Kevin Roth  
Mrs. Denise Roudebush  
Ms. Constance S. Rowe-Sullivan  
Ms. Marsha Rumschlag  
Mrs. Jennifer Ruprecht  
Ms. Debera Sassen  
Mr. Douglas M. Sawyer  
Ms. Marsha Schindler  
Mr. and Mrs. Jacob Schlemmer  
Mr. Lawrence G. Schmidt  
Mr. Kyle E. Schwyn  
Mr. Tom Scofield  
Mrs. Linda Scribner


Mr. Randall Sebastian  
Ms. Lee Shields  
Ms. Sally J. Short  
Mr. Dennis Shuler  
Mrs. Betty A. Simons  
Mr. William Sitz  
Ms. Patricia J. Smith  
Mrs. Karen M. Soldner  
Ms. Mary L. Sorg  
Mr. Steven Souder  
Ms. Sandra Speith  
Ms. Angela Springer  
Mrs. Willie Starks  
Mrs. Sheryl Stine  
Mr. Robert N. Taylor  
Ms. Joanie M. Thorne  
Ms. Victoria Timinsky  
Mr. Joseph P. Tratnyek  
Ms. Sarah A. Trittipio  
Ms. Rita Turflinger  
Mr. William Vogelgesang  
Mr. Dan B. Walton  
Mr. Kent Weber  
Ms. Andria S. Weiss  
Ms. Rosalie L. Werling  
Mrs. Carolyn D. White  
Mr. and Mrs. Kevin Wilder  
Ms. Tonna Williams  
Mrs. Rebecca Wolfe  
Mr. Timothy Wright  
Ms. Jill E. Zahm  
Mr. and Mrs. Jeff Zink

*If we have misspelled your name or inadvertently left it off our list, please call 484-9560 so we can make a correction.*



Nonprofit  
Organization  
U.S. POSTAGE  
**PAID**  
Ft. Wayne, IN  
Permit No. 67

Cancer Services of Northeast Indiana Inc.  
6316 Mutual Drive  
Fort Wayne, IN 46825

The logo for Cancer Services of Northeast Indiana Inc., featuring a stylized blue and gold figure holding a globe.